

# INT-GSM

## GPRS COMMUNICATION MODULE FOR INTEGRA AND INTEGRA PLUS

INT-GSM is a GPRS communication module that allows **INTEGRA** and **INTEGRA Plus** series of alarm control panels to communicate via GSM network. The device operates on control panel's keypad bus.

It supports two SIM cards, through which it can receive messages and incoming calls – at the same time. All GPRS transmissions are encrypted in the AES-192 standard.

INT-GSM reports events to two monitoring stations (eg. security agencies) via the GSM network. For this purpose it uses GPRS and SMS messages, with the possibility of setting the priority for each of the mentioned transmission paths.

Event notifications are created automatically based on the control panel event memory. The module sends information via SMS messages or CLIP service (up to 16 numbers) and, in case of cooperation with the INTEGRA Plus control panel, also e-mails (up to 16 addresses). After installing the **INTEGRA CONTROL** app, on the smartphone, PUSH notifications are available.

INT-GSM cooperation with INTEGRA/INTEGRA Plus control panels opens access to remote system control via:

- INTEGRA CONTROL app (GPRS)
- SMS messages
- costless CLIP service
- GUARDX program (GPRS).

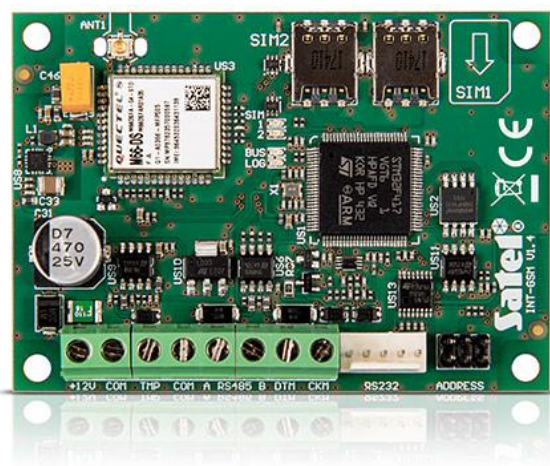
A big advantage of INT-GSM device is the ability to work with the **ETHM-1 Plus** Ethernet module (RS-485 port connection). By default, GPRS is a backup communication channel for Ethernet. The duo allows for realization of Dual Path Reporting, in accordance with EN 50136, as well as for determining the priority of event monitoring tracks (Ethernet, GPRS and SMS).

Communication via the GSM network enables wireless connection of the control panel and the computer with the installed **DLOADX** and **GUARDX** programs, and thus the configuration and management of the system, even from a remote location. Connection between the module and PC can be established via the SATEL connection setup service.

Module software updates are made via the RS-232 port or remotely via GPRS, using the **UpServ** software.

### Properties:

- cooperation with INTEGRA and INTEGRA Plus control panels (version 1.18 or higher)
- two SIM cards support
- possibility to check the pre-paid account balance
- time synchronization with the NTP server or GSM network
- messaging: SMS, CLIP, PUSH, e-mail (INTEGRA Plus)
- remote control: SMS, CLIP, mobile application
- reporting: GPRS, SMS
- possibility of cooperation with the ETHM-1 Plus Ethernet module (version 2.05 or higher):
  - Dual Path Reporting, compliant with EN 50136
  - backup communication path
- possibility of using the SATEL connection setup service
- remote system operation via INTEGRA CONTROL app
  - Android (version 4.2.7 or higher)
  - iOS (version 5.0 or higher)
- programming control panels by using DLOADX (version 1.18.000 or higher)



- supervision of the alarm system by using GUARDX
- possibility of cooperation with the **INTEGRUM** system
- possibility of remote update

## TECHNICAL DATA

Supply voltage	12 V DC
Board dimensions	80 x 57 mm
Operating temperature range	-10...+55°C
Standby mode current consumption	130 mA
Max. current consumption	250 mA
Weight	38 g
Maximum humidity	93±3%
Environmental class according to EN50130-5	II

